

FE235

Door Holder, Square Base, 400N

General

The FE235 is a surface mount door holder, with a Bayblend base, which offers a 400N holding force.

Magnet construction

The magnet is constructed with a pressed coil and anti-remnance pin, giving it a protection of IP54. The protection diodes are integrated into this construction.

Housing

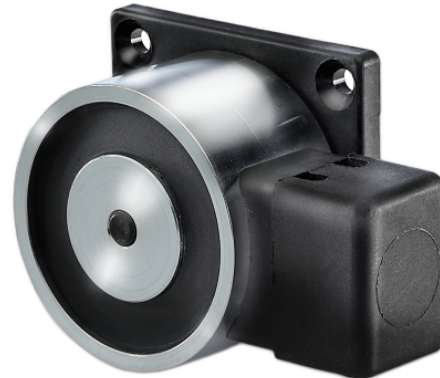
The plastic base is manufactured from Bayblend and contains 30% PA6 glass fiber, which makes it much stronger than standard ABS. Bayblend offers high heat resistance, high impact and notched impact strength, and high stiffness and dimensional stability.

Installer friendly

- For practical ease of installation, the door holder comes complete with electrical screw terminals. - The base is predrilled in a practical, standard format for rapid mounting. - The door holder is supplied complete with a keeper plate, which offer angular adjustment.

Approvals

The FE235 is fully approved according to EN1155.



Standard Features

- Low power - 1.6 W
- 400 N holding force
- Anti-remnant ejector
- Spark suppression diode and reverse polarity protection
- EN1155 approved
- Keeper plate included

FE235

Door Holder, Square Base, 400N

Specifications

Electrical	
Power supply type	24 VDC
Power consumption	1.6 W
Duty cycle	100%
General	
Holding force N (Newton)	400 N
Release button	No
Spark suppression diode	Yes
Reverse polarity protection	Yes
Physical	
Physical dimensions	55 x 55 x 33 mm
Environmental	
IP rating	IP54 (magnet) IP42 (connection)
Standards & regulation	
Standards	EN1155

Ordering Information

Part No.	Description
FE235	Door Holder, Square Base, 400N
FE230	Door Holder, Surface Mount, 400N, with Release Button
FE240	Door Holder, Flush Mounting, 400N
FE245	Door Holder, Wall Mount, 400N, with Release Button
FE250	Door Holder, Floor Mounting, 400N, with Release Button
FE260-175	Door Holder, Universal Adjustable Tube, 400N, with Release Button, 175 mm
FE260-325	Door Holder, Universal Adjustable Tube, 400N, with Release Button, 325 mm
FE260-475	Door Holder, Universal Adjustable Tube, 400N, with Release Button, 475 mm
FE290	Door Holder, Surface Mount, 400N, Mains Powered