

FE130MM

Eco Line magnetic lock 300 kgf, monitored, mortise mount

Description

Eco Line mag 300 kgf, monitored. Mortise mounting.

Application

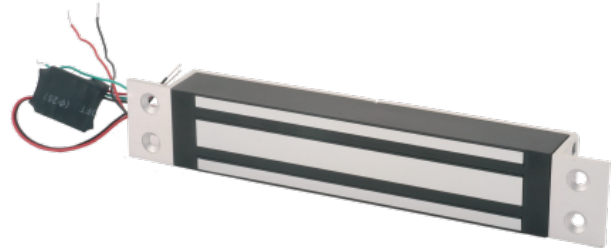
Medium Security applications for internal and external doors and transom housings.

Reliable Security

This state of the art electro-magnetic locking device provides positive, instantaneous door control. Filler plates, angle rackets, and other mounting adapters are available to satisfy a wide range of door and frame types and conditions.

Safe operation

Our locking devices are inherently fail-safe, releasing instantly upon command or loss of power. With no moving parts to wear, stick or bind; no mechanical linkages to bend or break; and no bolt travel time or misalignment to raise concern, both unlocking and locking are always accomplished with ease and efficiency. As those electromagnetic locking devices function independently of any mechanical type locks, magnetic locks will not jeopardize the fire door rating of an opening.



Standard Features

- 300 kgf holding power
- Monitored changeover
- No residual magnetism
- 12/24 V dc jumper selectable operation
- Mounts easily with a minimum of tools

FE130MM

Eco Line magnetic lock 300 kgf, monitored, mortise mount

Specifications

General	
Product type	Magnetic lock
Holding force	
Holding force kgf (Kilogram force)	300 kgf
Holding force N (Newton)	3000
Monitoring & status	
Monitored	Yes
LED indicator	No
Door status switch	No
Monitored changeover	Yes
Magnetic bond sensor	Yes
Electrical	
Power supply value	12 / 24 VDC
Current consumption	450 mA (+/- 2,5% @ 13,5 V)
Physical	
Physical dimensions	228 x 38 x 27 mm (W x H x D)
Colour	Aluminium
Finish	Vapour blasted aluminium

Ordering Information

Part No.	Description
FE130MM	Eco Line magnetic lock 300 kgf, monitored, mortise mount