

ATS 4-zone DGP with Output Connector in plastic housing

ATS1220

Input Expanders

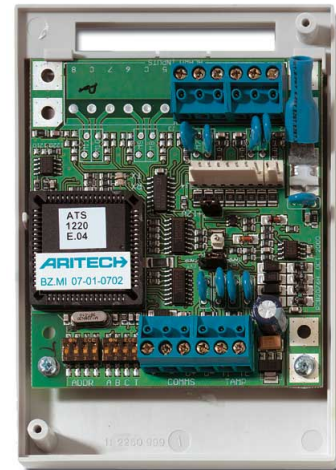
4-zone DGP with Output Connector (ATS1644 plastic housing included). Depending on the basic capacity of the control panel up to 15 input expanders can be used at a maximum distance of 1,5km.

Specifications

Power supply	10.5 - 13.8 VDC
	Powered by the panel bus
Current consumption	53 mA
Inputs	4
OC outputs on board	8
Max. number of outputs	16
Max. distance from panel	1.5 km
Max. number per panel	15
Specified cable	WCAT 52/54 or equivalent
Data bus monitoring	Yes
Addressing	Individually, by DIP switches
PCB dimensions	90 x 80 mm
Housing dimensions (W x H x D)	124 x 87 x 34 mm
Operating temperature	-10° to +50°C

Ordering Information

ATS1210	ATS 8-zone DGP with Output Connector in plastic housing
ATS1211	ATS 8-zone DGP with Output Connector in steel housing
ATS1220	ATS 4-zone DGP with Output Connector in plastic housing



- 4 inputs on board
- 8 OC outputs on board
- Plastic enclosure with opening tamper sensors